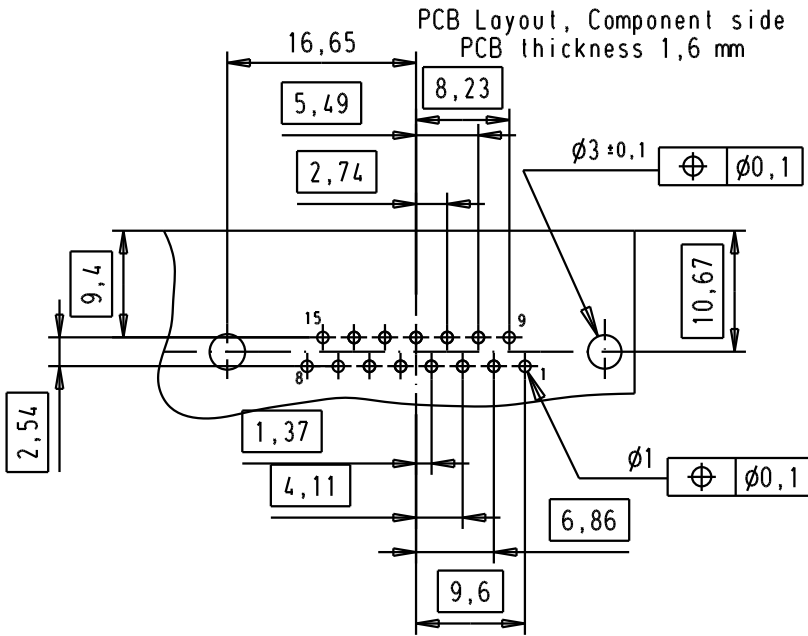
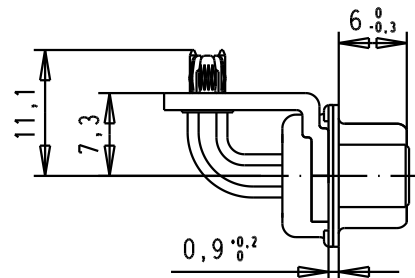
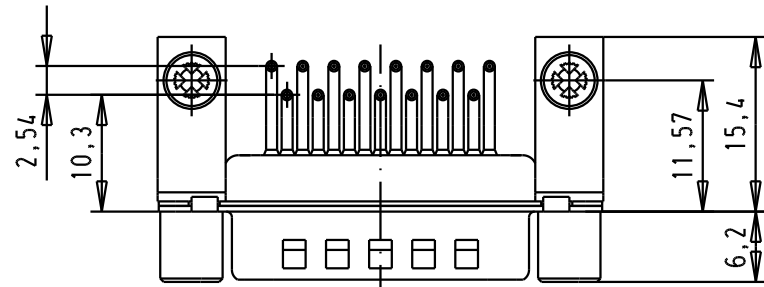
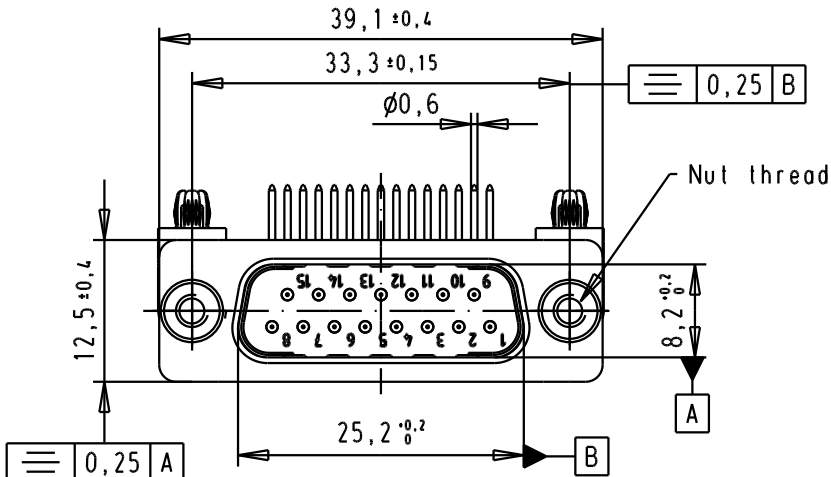


D
C
B
A



SPECIFICATION

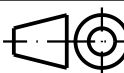
Mating Cycles	500
Filter type	C
Capacitance	1000pf±20%
Working Voltage	100V
Current rating	7,5A
Insulation Resistance	>1GΩ

Minimum Insertion Loss

FREQUENCY (MHz)	ATTENUATION dB
5	1dB
10	3dB
50	12dB
100	20dB
500	34dB
1000	30dB

09642247235	M3
09642247234	4-40UNC-2B
Part number	Nut thread

32111	03/06/04	AF	
31058	08-Jul-02	CV	
Mod.	Dat.	Name	

	Dat.	Name
Detail.	08-Jul-02	CV
Insp.		
Stand.		
		
All Dim. in mm Orig. Size DIN A 4		
HARTING EURL F-95972 Paris		

D-Sub, male, angled,
15 Poles, with turned solder
pin, metal bracket,
screw lock and board lock

TB 0964224723x

Sub.